



# VERSAFLEX™

Hittable door technology from  
Jamison that delivers more payback



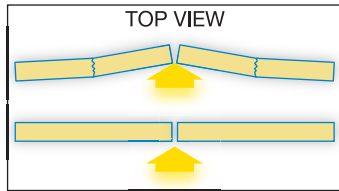
*Built by Jamison, the world's largest thermal door manufacturer, the VersaFlex™ was specially-designed with every component being a part of the hittable process.*

## **JAMISON**

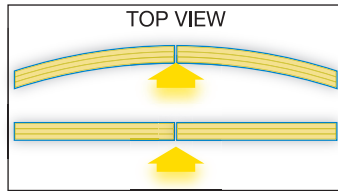


## Unique hittable panel design

Using Jamison's unique patent-pending Shearflow™ technology, panels are constructed with internal layers that move independently when struck, sliding relative to one another versus being constructed as a solid panel. This innovative panel design is unlike any other, and allows the panel maximum flexibility when hit and quickly returns to its original form. The Shearflow design reduces its normal rigidity by 75%, yielding to the impact, without damaging the panel or door components.



All other hittable doors are made with a single semi-rigid core



Shearflow™ internal layers slide relative to one another when struck

## Superior Trailing Edge Assembly for the best door seal

The door panel is captured and pulled tightly against the casing when closed, creating an excellent seal against infiltration and eliminating ice build-up. The rigid trailing edge stiffener is selective in its work, providing an effective tight seal when the door is closed, but when hit, the edge is flexible enough to allow the panel to bend to the impact.



## The Living Hinge

Door panels are secured along the top of the carrier with a unique flexible design that allows a continuous swing motion, and the flexibility to move the panels back and forth independently of the carrier assembly. There are no moving hinge parts to wear out or carrier components to replace after impact.

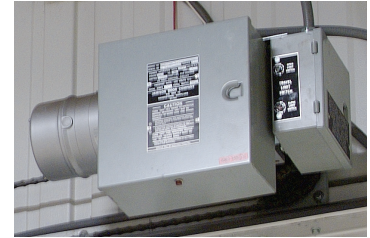


## The highest R-Value for a hittable door

You choose the insulation value to best fit your opening. VersaFlex comes in two models of R-Value, a standard core of R10, and an Ultra High R Core that provides up to R32. Ultra High R-Value cores are perfect for freezer applications where ice can be a challenge.

## You choose the Powertron® operator

The Jamison Powertron® has been tested in over 2,000,000 continuous open and close cycles, and remains the most recognized and dependable door operator available. Select between the dual speed Powertron and the more technologically-advanced Powertron Digital Controller.



## Retrofittable panels

Exchange your Jamison Mark IV hard door panels with flexible VersaFlex hittable panels. Cooler models require panel replacement and simple door frame adjustments. On freezer models, you will need to add a heated gasket if not already present.

### SPECIFICATIONS

**Model:** Bi-Part

**Opening Sizes:** Bi-Part up to 10' x 16'

**Temperature:** -20F with a temperature difference of not more than 100F at R32, 60F at R10

**Electrical Requirements:**

DMC (ECTI) operator: Single phase (VAC): 120, 220

Two or Three phase (VAC): 208, 230, 460, & 575

Dual speed operator (standard):

Three phase (VAC): 208, 240, 480, & 575

**Finish:** Blue Reinforced Vaportite surface

**Gaskets:** Adjustable vinyl gaskets at two sides and across head of casing frame

**Trailing Edge Assembly:** Flexible side panel stiffener with patented clips to lever and seal trailing edge

**Standard Opening Device:** Two pull cord switches

**Time Delay Closing:** Standard dual speed operator, optional DMC (ECTI) operator

**Options:**

- Electric eye
- Motion detector
- Radio control
- Push button operation, single or three buttons
- Mirror image frame
- Floor loop
- Jambs
- Inside trim
- NEMA 4X enclosure

📍 Fray Pedro de Gante 85, Cimatarío, Santiago de Querétaro, Querétaro, México CP 76030

☎ (442) 727-0441

✉ contacto@klh.com.mx